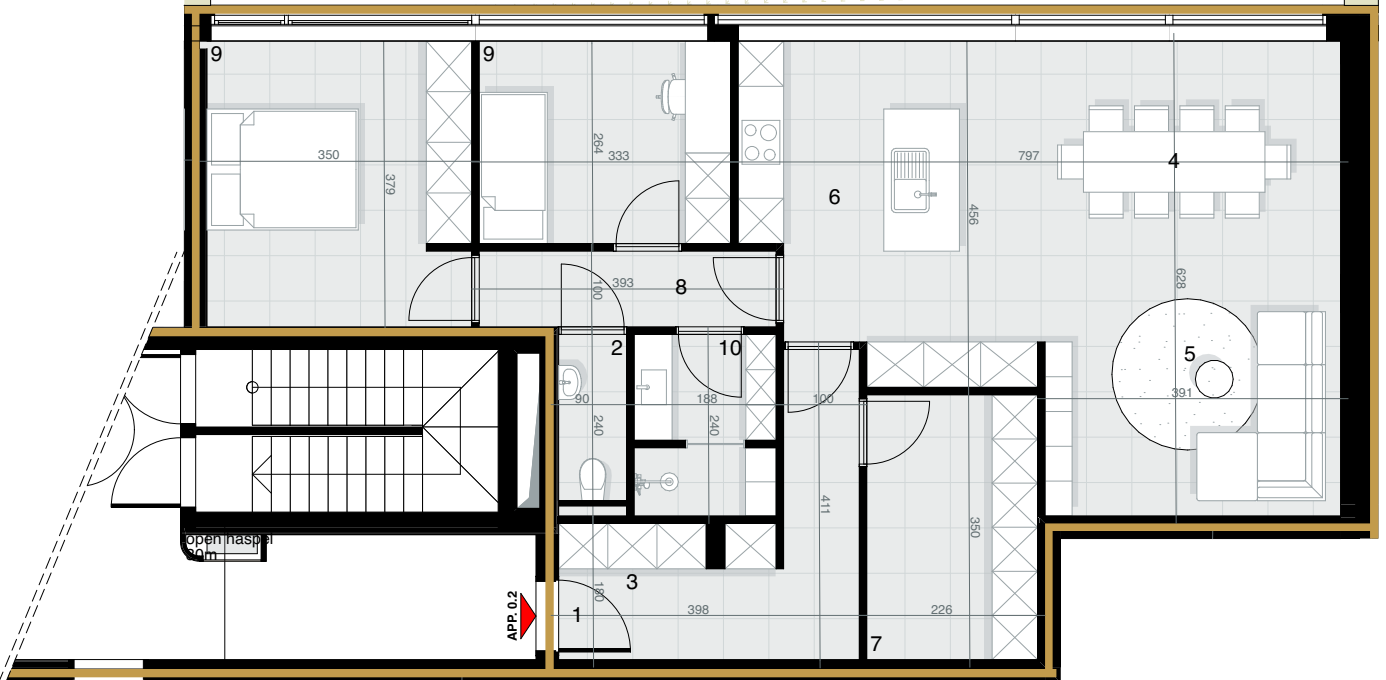
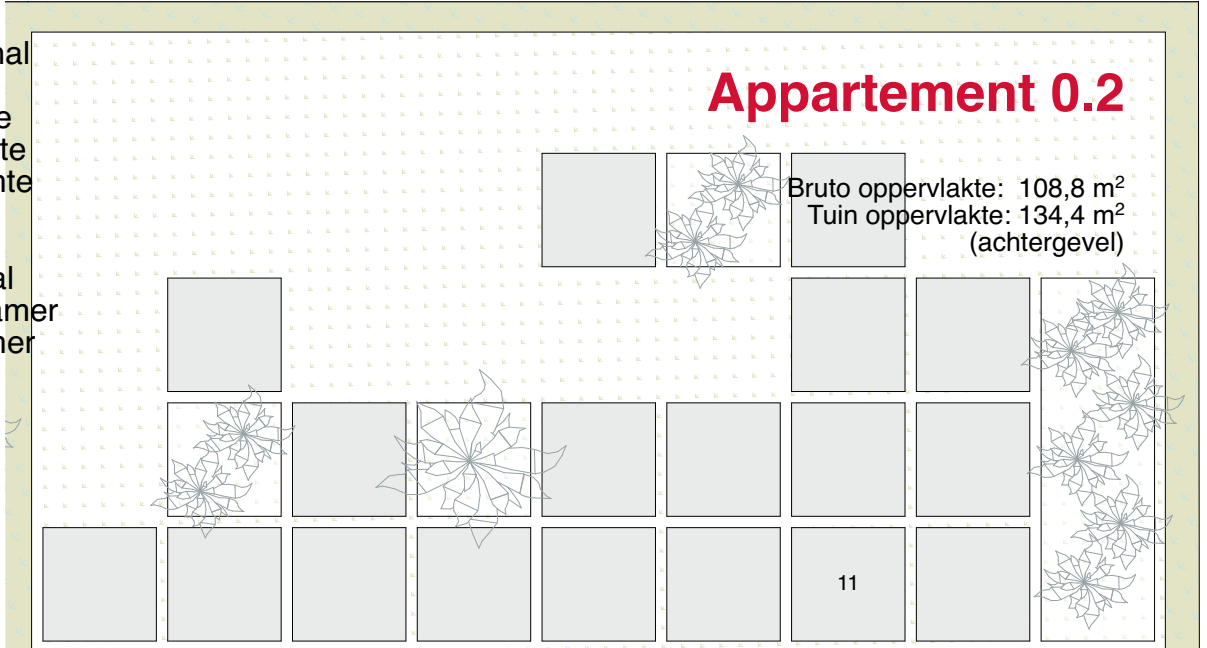


Appartement 0.2

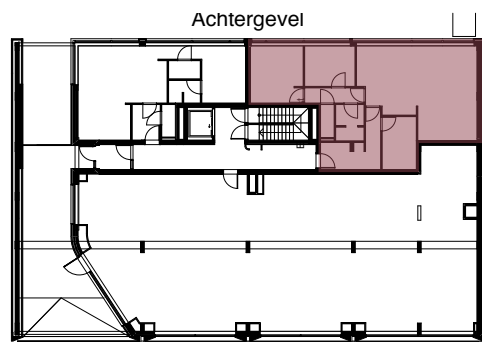
Bruto oppervlakte: 108,8 m²
 Tuin oppervlakte: 134,4 m²
 (achtergevel)

- 1 inkom/hal
- 2 toilet
- 3 vestiaire
- 4 eetruimte
- 5 leefruimte
- 6 keuken
- 7 berging
- 8 nachthal
- 9 slaapkamer
- 10 badkamer
- 11 terras



1:100

Detailplan NIV 0.



1:500

Overzichtsplan NIV 00



1:500

Achtergevel