

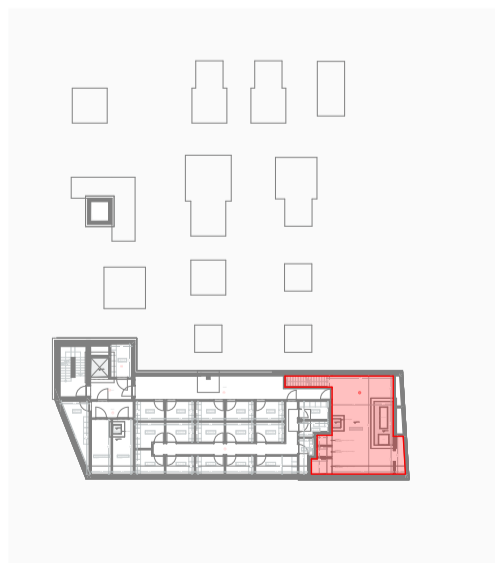
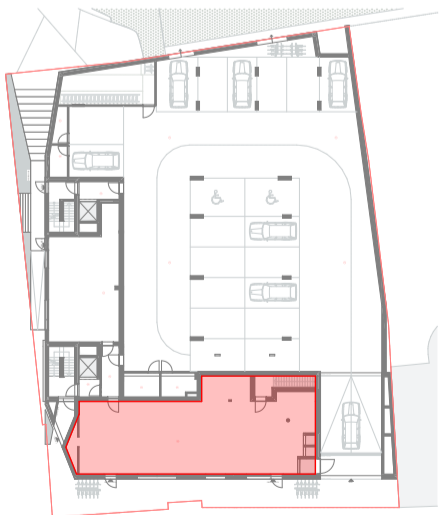
Horeca 0.1

BVO - Horeca 0.1: 198.31m²
 BVO - Horeca keuken: 80.10m²

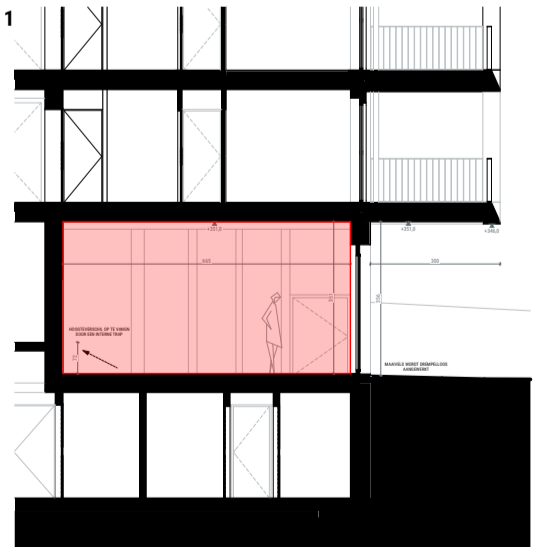
TOTAAL - 278.41m²



SNĒDE 1



SNĒDE 1

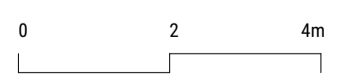


Residentie Klaver



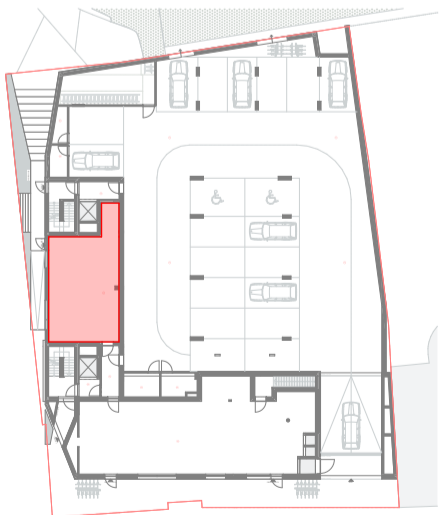
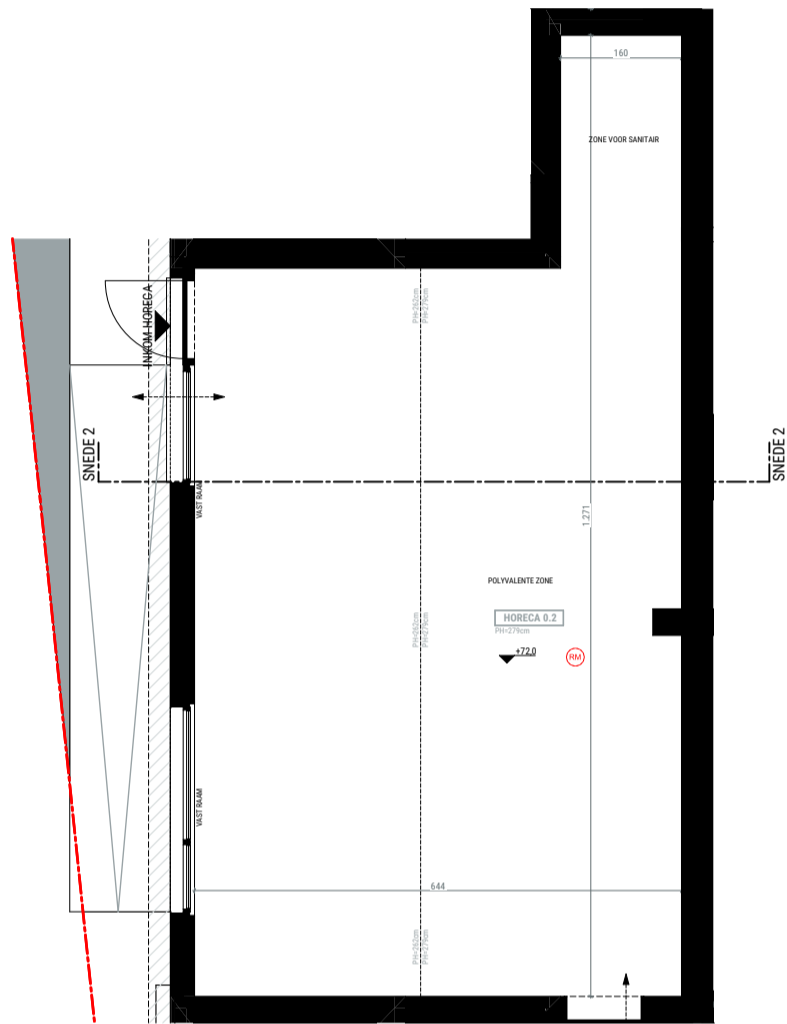
'UAU'
 COLLECTIV

© ALL RIGHTS RESERVED

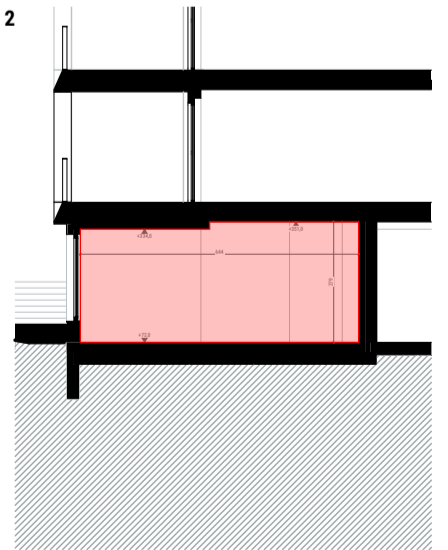


Horeca 0.2

BVO - Horeca 0.2: 83.43m²



SNEDE 2

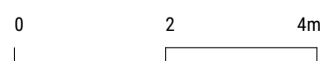


Residentie Klaver



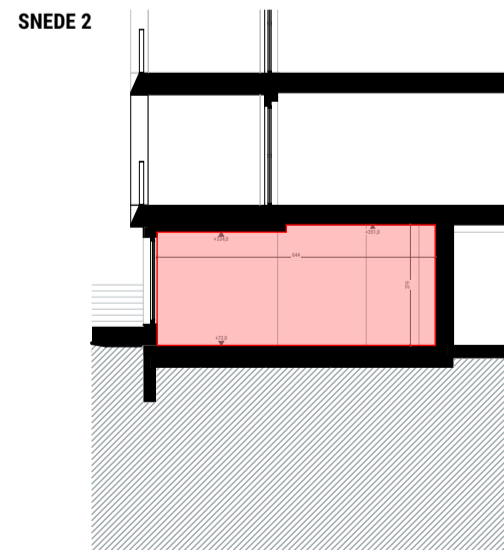
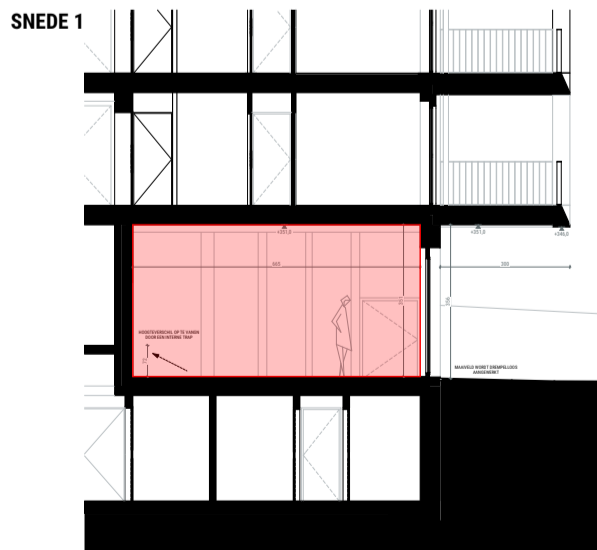
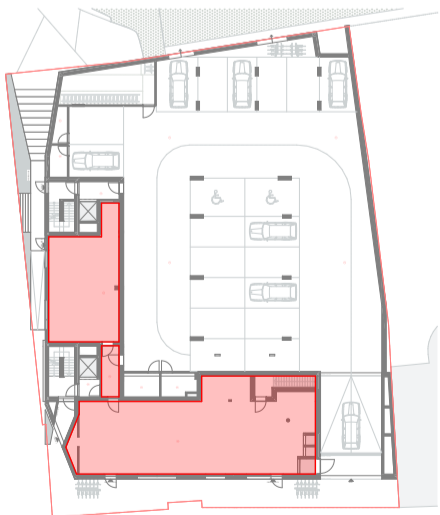
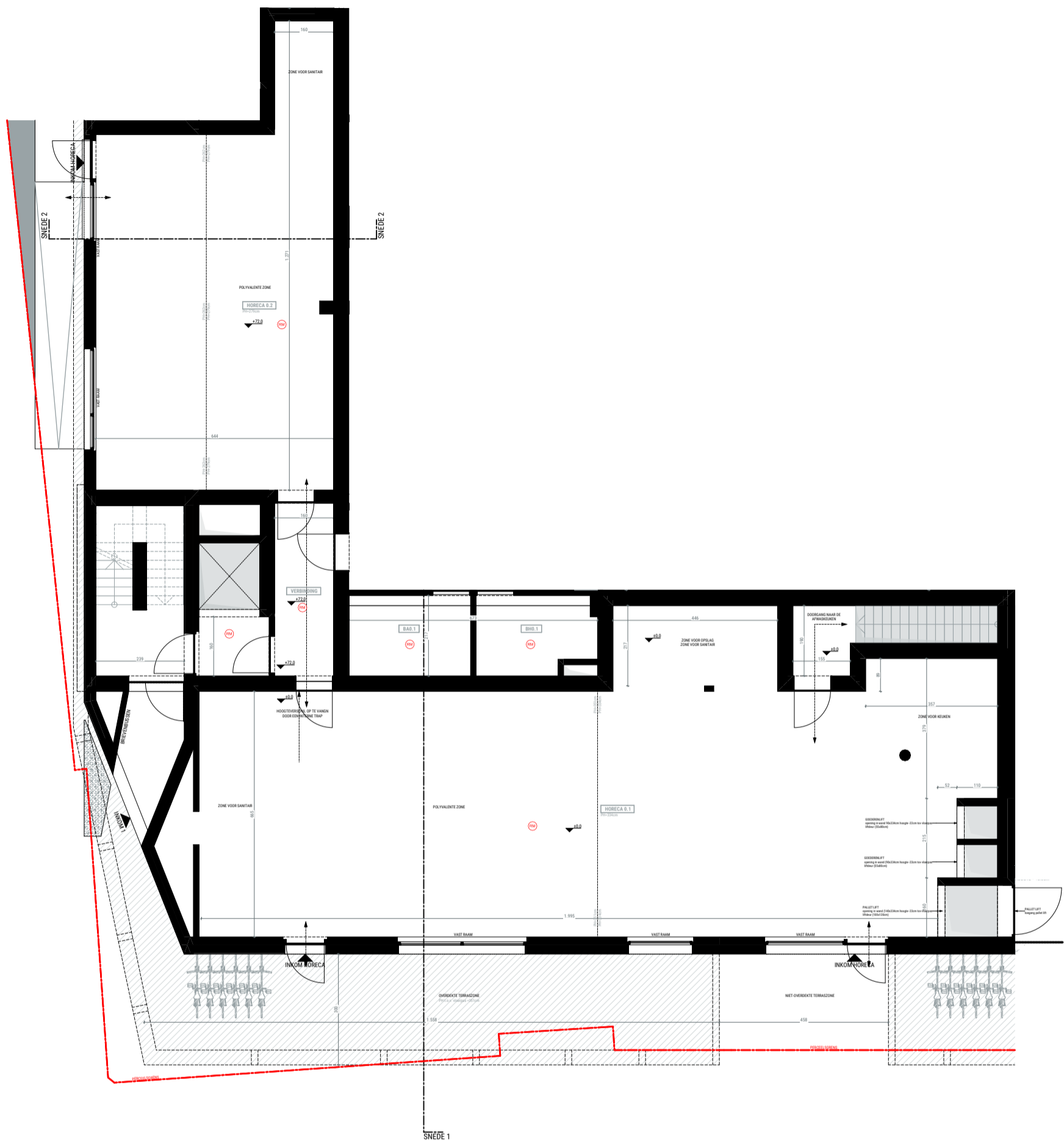
'UAU'
COLLECTIV

© ALL RIGHTS RESERVED



Horeca 0.1 + 0.2

BVO - Horeca 0.1: 198.31m²
 BVO - Horeca 0.2: 83.43m²



Residentie Klaver



'UAU'
 COLLECTIV
 © ALL RIGHTS RESERVED

